

ASSURING THE LIFECYCLE OF A NEW NETWORK

In planning and building a new telecommunications network, an operator needs to deploy a cloud-native, probe-based assurance solution that provides a macro and micro view of their end-to-end service quality, insights into the real-life customer experience and low-level tools to optimize and pinpoint degradations as quickly as possible. RADCOM ACE ensures a successful network launch by providing critical probe-based insights along all stages of the network evolution.

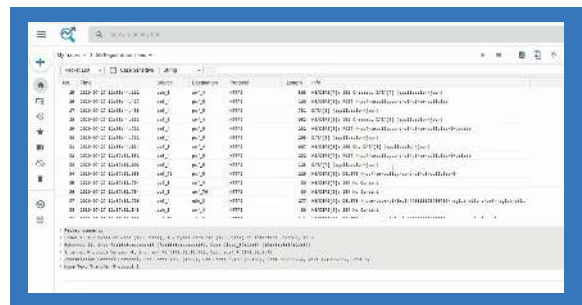
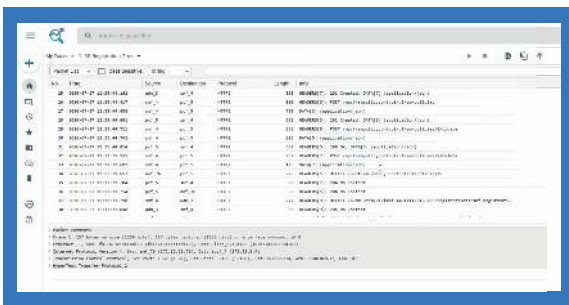
PLANNING STAGE

In the critical planning stage of the network, RADCOM ACE is the vendor-agnostic, independent auditor of the network. Probes deployed are non-intrusive and so don't add any burden on the network (as opposed to generating network events) and enables an operator to evaluate network elements, the services delivered, and the overall performance between vendors as they are placed in the network and as more equipment and services are tested over time. Providing operators, a vital, independent auditor that will paint a vendor-agnostic picture of the network equipment and overall service quality. These insights enable the operator to evaluate different network equipment providers and choose the best in the breed by the raw data and the real-life network deployment to ensure the right foundations are laid for a successful network implementation.



PRE-LAUNCH

LAB STAGE



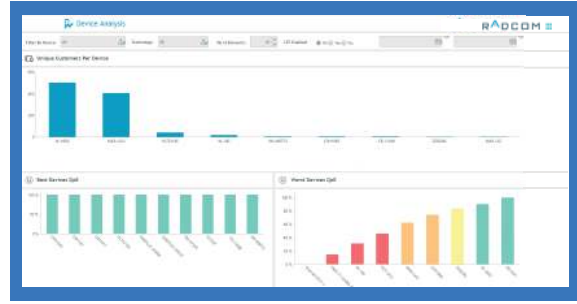
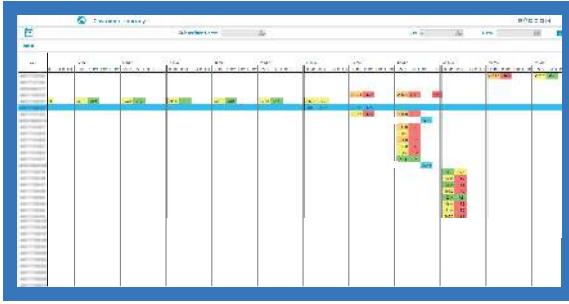
At the lab stage, RADCOM provides operators with advanced, troubleshooting tools such as RADCOM Session Analyzer (for call tracing) and RADCOM Packet Analyzer (packet analysis) to perform deep-packet and root-cause analysis of the new network architecture all enabled through RADCOM's probes.

RADCOM's next-generation troubleshooting suite has an intuitive, unified UI built for troubleshooting next-generation networks and built for collaboration across the operators organisation with traces being available to multiple users and shared on the cloud. Being cloud-based, there is no need to install a client, and the system can run on Windows, UNIX, or Linux. It is swift, supports multiple users out of the box, and offers full administrative control while adhering to security and user content privacy.

RADCOM's network troubleshooting portfolio enables engineers to identify, analyze, and quickly resolve network issues before the operator moves to the launch stages.

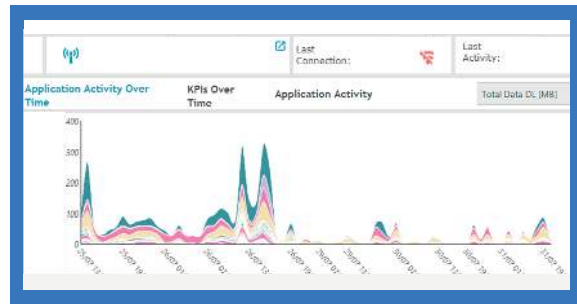
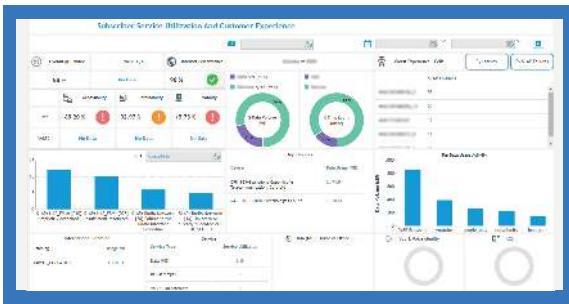


LIMITED LAUNCH



Once the network is launched RADCOM provides a smart monitoring solution for all aspects of the services and devices running on the network. Data is collected and correlated through RADCOM's probes to provide detailed analysis of the end-to-end services and any devices connected to the network. For example, RADCOM provides the operator with detailed information on the subscribers journey as they connect to the network; through the virtual RAN and into the core. The operator can easily identify where there are network degradations. The same applies to the devices connecting to the network. Issues can be pinpointed for specific handsets (and segmented by 5G devices) before services are fully launched.

SOFT LAUNCH FOR FRIENDLY TESTING



The soft launch phase opens up the network to friendly testing (employees, employees' families etc and not paid subscribers). At this stage it is critical to cover all aspects of the network and fix problems quickly before launching full commercial services and opening up to paying customers. RADCOM's probe-based assurance enables the operator to smartly monitor all services, connected devices, overall network performance and the customer experience. With the ability to drilldown from the macro to micro levels in a few clicks of the mouse, operators can quickly pinpoint and rectify any issues before commercial launch.

INITIAL COMMERCIAL LAUNCH

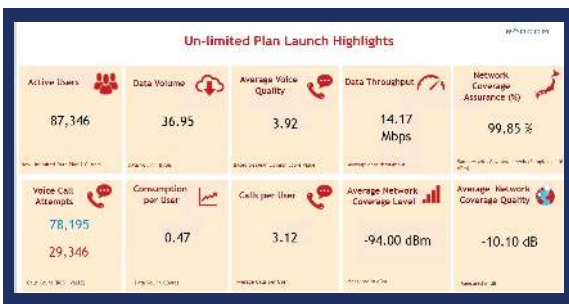
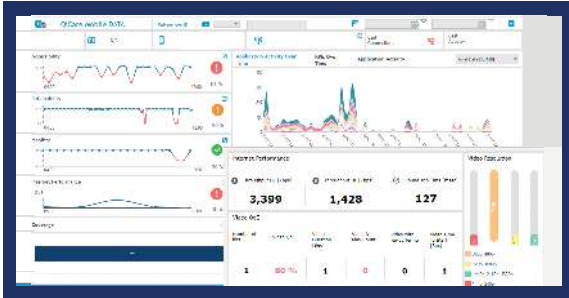


The initial launch is always phased to see how services and the network performs as subscribers are added. Typically 10k, 50k and then 100k subscribers are added in batches of two weeks before the network is fully launched and then the network is opened to anyone. At this stage RADCOM's solution monitors all the different services to make sure there is no degradation in service. RADCOM also provides the operator with the ability to easily check newly provisioned subscribers so the operator can focus on ensuring that the onboarding process goes smoothly and as successful as possible.



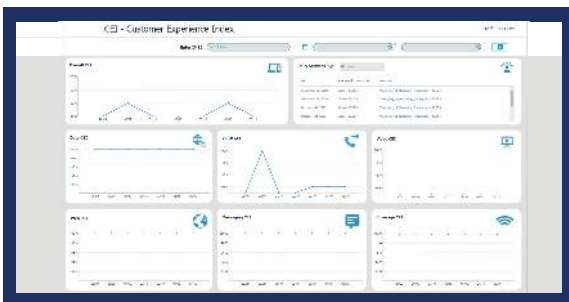


FULL COMMERCIAL LAUNCH



Once full commercial launch services have been launched it is critical for the operator to constantly monitor the end-to-end service and detect any issues before they affect subscribers. As well as providing network intelligence to engineers and network operations RADCOM also provides executive dashboards so quality of service can be carefully monitored and assured on a day-to-day basis

ON-GOING DELIVERY



As the operators continues to onboard new subscribers it is critical for the operator to continually monitor not only the services and overall network performance and rectify issues proactively it is also vital that operators use the probe-based data to asses the real-life customer experience through the monitoring of the customer experience index across all the different services; VoLTE, video streaming etc.



RADCOM is the leading expert in cloud-native, containerized, and automated service assurance solutions with AI-driven insights for complete network visibility. RADCOM's solution supports operators in their transition to 5G, delivering dynamic, on-demand service assurance and network troubleshooting for real time customer and service insights. RADCOM's solution for 5G, RADCOM ACE is explicitly designed for telecom operators and delivers Automated, Containerized, and End-to-end network visibility.

For more information on RADCOM ACE [click here](#)

All rights reserved. This presentation contains proprietary information of RADCOM Ltd. Without the express prior written permission of RADCOM Ltd., no part of the contents hereof may be used for any other purpose, disclosed to persons or firms outside the recipient company, or reproduced by any means. RADCOM Ltd reserves the right, at its sole discretion, to make changes at any time in its technical information, specifications, and services.