



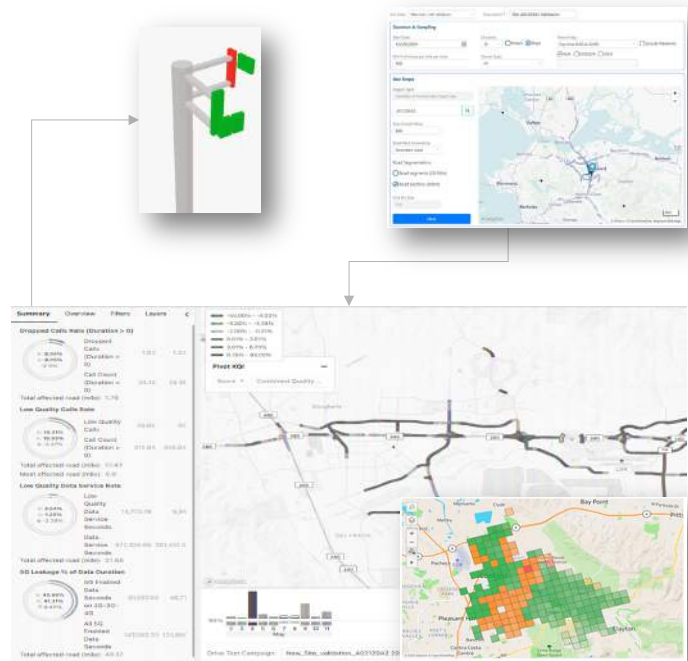
Operators moving to 5G stand-alone cellular networks and beyond are faced with the burdensome tasks of planning, deployment, testing, and maintenance of new sites. RADCOM New Site Validation enables telecom operators to conduct virtual tests before, during, and after deploying a new 5G site. It provides an on-demand and semi-automatic site validation solution that compares radio performance and service quality to ensure fully optimized site rollouts while reducing costs.

RADCOM New Site Validation solution enables operators to reduce the reliance on physically driving to a new site, offering network insights across travel routes and regions, on highways or railways, and in urban or rural areas. Its virtual testing and verification technology delivers a more efficient, cost-effective, and sustainable approach to new site validation. Incorporating RADCOM Virtual Drive Test technology, it measures subscribers' experience in each region, whether mobile or stationary, offering detailed analysis, including transitions from adjacent and remote cells, making the solution unique for post-deployment customer impact analysis. Users can drill down to the street level and the experience per device type, subscriber, and group.

With unique on-cloud capabilities across all leading hyperscalers and software as a service (SaaS), its unique AI and ML capabilities correlate RAN to core datasets to optimize performance. Its built-in complaint investigation capabilities send a 'virtual drive test' for immediate validation and analysis of a customer complaint, analyzing thousands of subscribers on the same route. This helps network engineers detect, troubleshoot, and resolve cross quality issues quickly and efficiently.

Benefits

- Reduces costs by up to 30%
- Increases site rollout capacity by 20-25%
- Grades precise travel routes and regions, delivering up-to-date experience heatmaps
- Facilitates faster customer complaint resolution
- Offers a greener-more environmentally friendly approach to drive tests that cuts carbon dioxide emissions by ~200 tons CO2
- Provides unique pre and post deployment customer impact analysis
- Supports continual testing of road segments



RADCOM (Nasdaq: RDCM) delivers real-time network analysis, troubleshooting, and AI-driven insights to ensure a superior customer experience. Utilizing cutting-edge technologies for over 30 years, we provide dynamic service assurance through the following solutions, including: RADCOM Customer Experience, RADCOM Network Performance, RADCOM Operational Efficiencies, RADCOM Network Troubleshooting, RADCOM Revenue Generation, RADCOM Service Quality and RADCOM Network Tapping.

For more information visit: <https://radcom.com/>